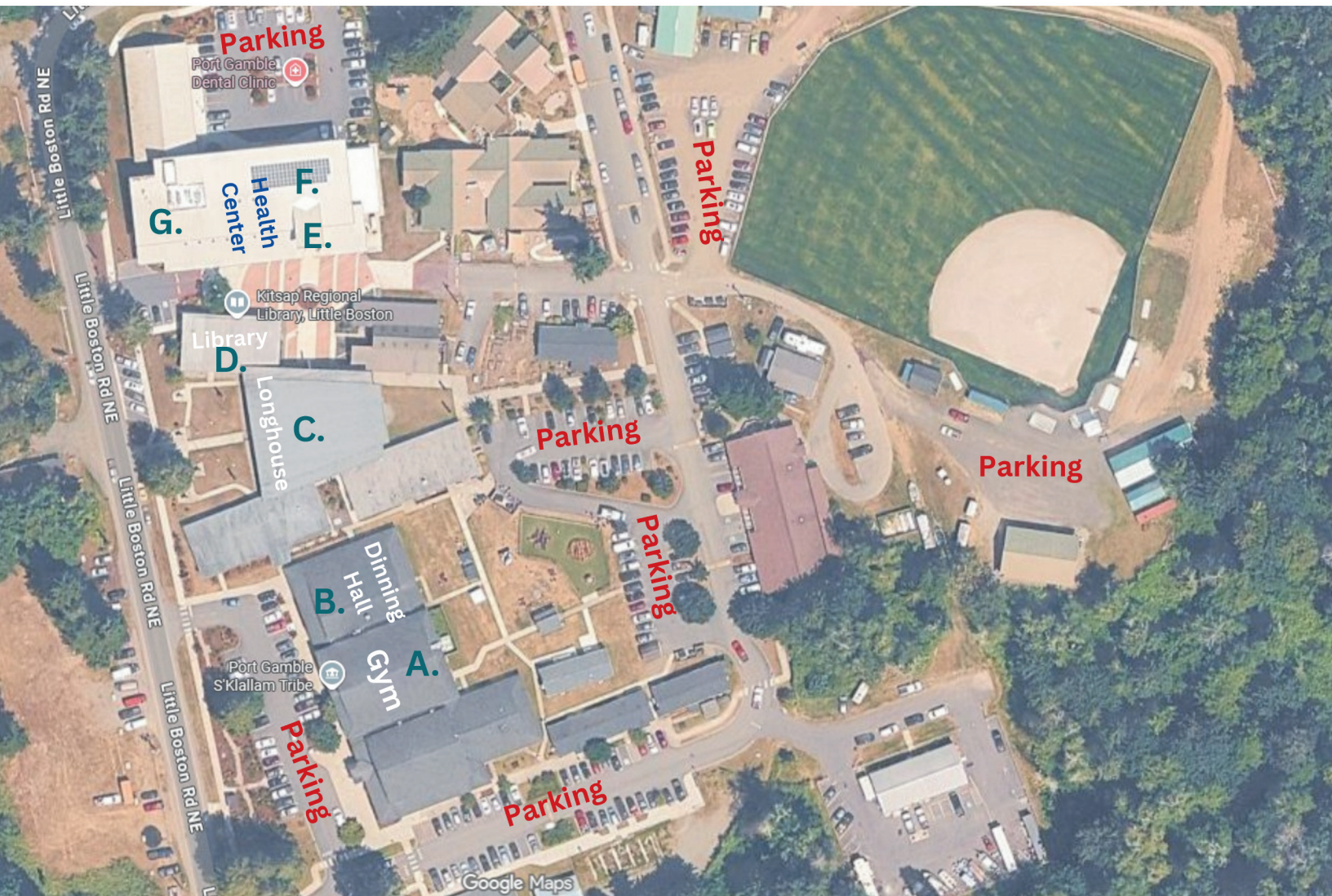


Tribal BH Crisis Academy
September 22 - 24, 2025
Port Gamble S'Klallam Tribe
31912 Little Boston Rd NE
Kingston, WA 98346



- Registration, large group meetings, and meals are in the Gym.
- Parking is limited, carpooling encouraged.
- Hotel Shuttle available from The Point to the Tribal Center and to the Culture Night dinner at Heronswood Garden, see agenda for details.

Breakouts by Topic

Monday PM

Tribal Crisis Lines & After hours phones

A. Gym

Working with Native & Strong Lifeline

C. Longhouse

Working with Regional Crisis Lines

G. Health Center 2nd Floor Executive Room

Tuesday AM

Tribal Designated Crisis Responder

A. Gym

Alternatives - LRA, AOT, Competency Restoration

B. Dining Hall

Tribal Mobile Crisis Team

C. Longhouse

Tribal Crisis Coordination Protocols

D. Library

Tribal Court Orders & Procedures

E. Health Center 1st Floor Conference Room

Co-Response Models

G. Health Center 2nd Floor Executive Room

Tuesday PM

Coordination with E & T and SWMS

B. Dining Hall

Hospital EDs

C. Longhouse

Peer Respite & Transitional Housing

E. Health Center 1st Floor Conference Room

Local Crisis Facilities

G. Health Center 2nd Floor Executive Room

Breakouts - Team Exercises

A. Gym - Nisqually & Squaxin Island

B. Dining Hall - Makah

C. Longhouse - Spokane & Colville

D. Library - Tulalip

E. Health Center - 1st Floor Conference Room - Lummi

F. Health Center - 2nd Floor Break Room - Muckleshoot

G. Health Center - 2nd Floor Executive Room - PGST

There are also a few outdoor seating areas available on a first come, first serve basis.